



KINDSWATER

Operating Instructions and Description

Turbo nozzle KW-P2365/400 - PN 16 EN 15182-2 Type 3

1. Features and Properties

Type	KW-P2365/400
Flow settings at 6 bar (l/min)	70 / 130 / 230 / 400
Connection	Storz B-75 / Storz C-52
Measurements (mm)	310 x 255 x 127
Weight	2,35 kg / 2,2 kg
Item number	900010461 / 900010460

- Jet form adjustable from full jet to spray jet with water curtain effect
- Pointer when set to spray jet, easy to feel for better orientation in zero visibility
- All jet forms that can be set fixed using lock points
- Flow rates can be adjusted using rotating ring in four locking positions from 70 to 400 l/min
- Pointer when set to 230 l/min, easy to feel for better orientation in zero visibility
- Rinsing position for flushing out dirt particles even during use
- Ergonomic pistol grip and easy-access switch lever
- Robust make (anodised aluminium, stainless steel, rubber)
- Ball bearing in control element made from chrome-plated brass
- Stainless steel turbo wheel
- Inlet swiveling under pressure
- Serial number on each nozzle

2. General Information

- Read the operating instructions before use!

- ⚠ Before use, check the nozzle and operating elements for damage or malfunction!
- ⚠ Nozzles generate recoil forces, depending on the pressure and flow rate!
Always open and close the nozzle slowly!



KINDSWATER

3. Commissioning and Operation

- Connect the nozzle to an appropriate hose.
- Ensure that the nozzle and hose are coupled together properly.
- Always hold the nozzle tightly by the handle before opening it.
- Always open and close the nozzle slowly.
- To change the jet form, rotate the jet pipe head into the desired position (pointer at 12 o'clock = spray jet; rotation to the right = full jet; rotation to the left = water curtain).
- To change the flow rate, rotate the adjustment ring left or right into the desired position.
- To use the rinsing function, rotate the adjustment ring for the flow rate to the left, past the 400 l/min marking until it cannot rotate any further.

4. Product Information

- The optimum flow is achieved at an inlet pressure of 6 bar.
- The maximum working pressure is 16 bar.
- When the pressure is less than 6 bar, only a limited flow and reduced discharge distance are achieved.
- Only suitable for use with water and fire extinguishing foam.

5. Safety Information

- Only use the nozzle when no damage or malfunction has been found on the nozzle or operating elements.
- Leave the hazardous area immediately if pressure is applied to an unsupervised nozzle in an open state or a bearer loses an open nozzle that is subject to pressure. Never try to "catch" a nozzle that is out of control! Remove the pressure from the nozzle immediately!
- Do not make any impermissible modifications to the nozzle or the operating elements!

6. Extinguishing on Electrical Systems

- ⚠️ Poor visibility (smoke, darkness) and other conditions surrounding fires make it impossible to determine safety distances with any accuracy! It is recommended that the electricity supply is interrupted as quickly as possible and the greatest possible safety distance maintained (min. 1 m at voltage of up to 1000 V), as well as using a minimum spray angle of 30°! If these conditions cannot be met, do **not** use the nozzle to fight fires on electrical systems!



KINDSWATER

7. Maintenance

- Low maintenance due to high quality and care in manufacture.
- After each use, remove the water from the jet pipe by opening and closing it repeatedly.
- After use with foam agents, flush the jet pipe thoroughly with water.
- After each use, inspect for defects and malfunctions in the operating elements.

The jet pipe can be dismantled and reassembled using special tools, but this requires functional expertise and some experience.

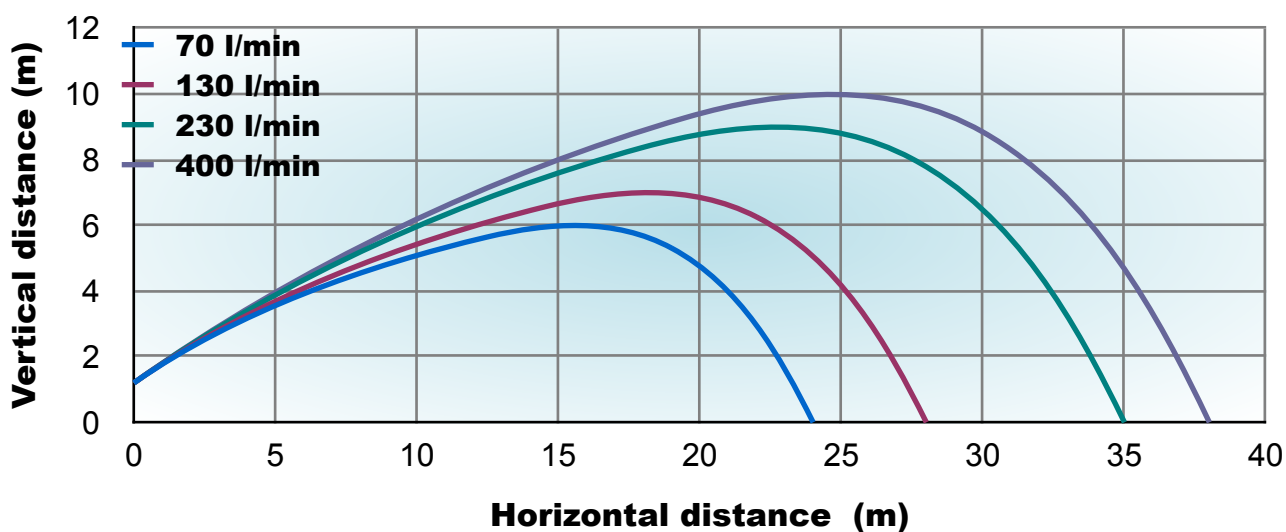
Because the flow settings have to be reset each time the device is dismantled and reassembled, we recommend returning it to the factory when repairs are required.

8. Accessories

Accessories	Item number
Heavy foam attachment KW-P213/2365	900010465
Medium foam attachment KW-P226/2365	900010466

9. Distance chart

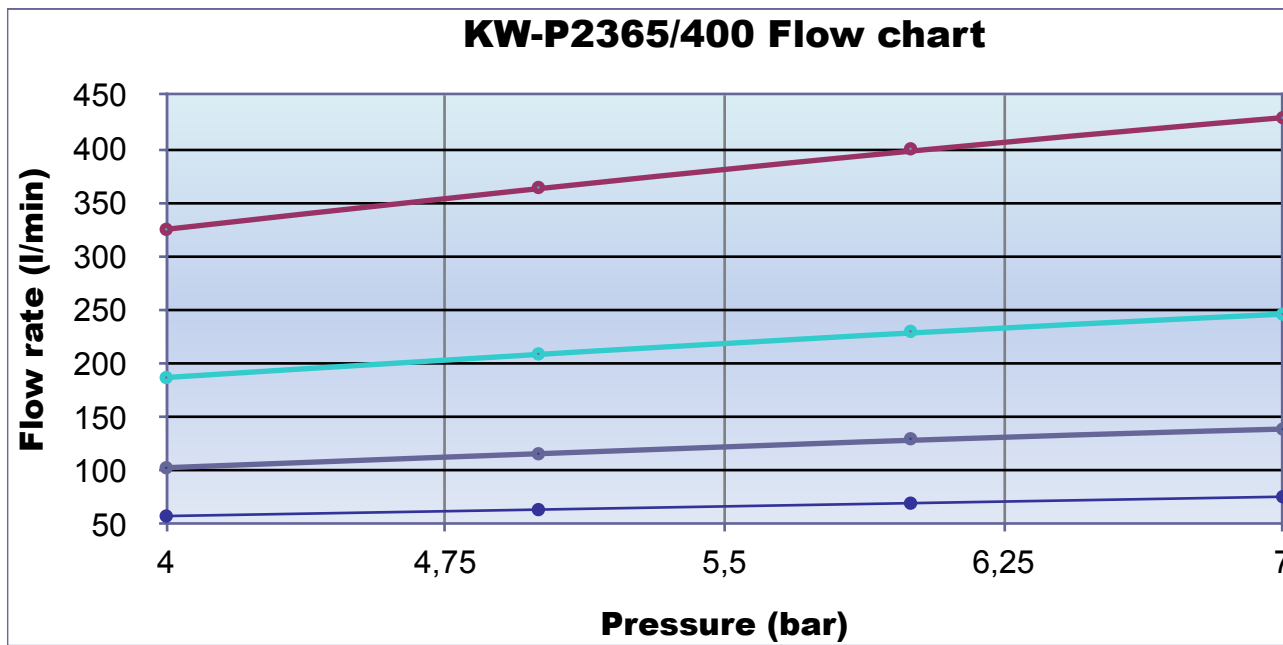
**KW-P2365/400 Distance chart
(@ 6 bar)**





KINDSWATER

10. Flow chart

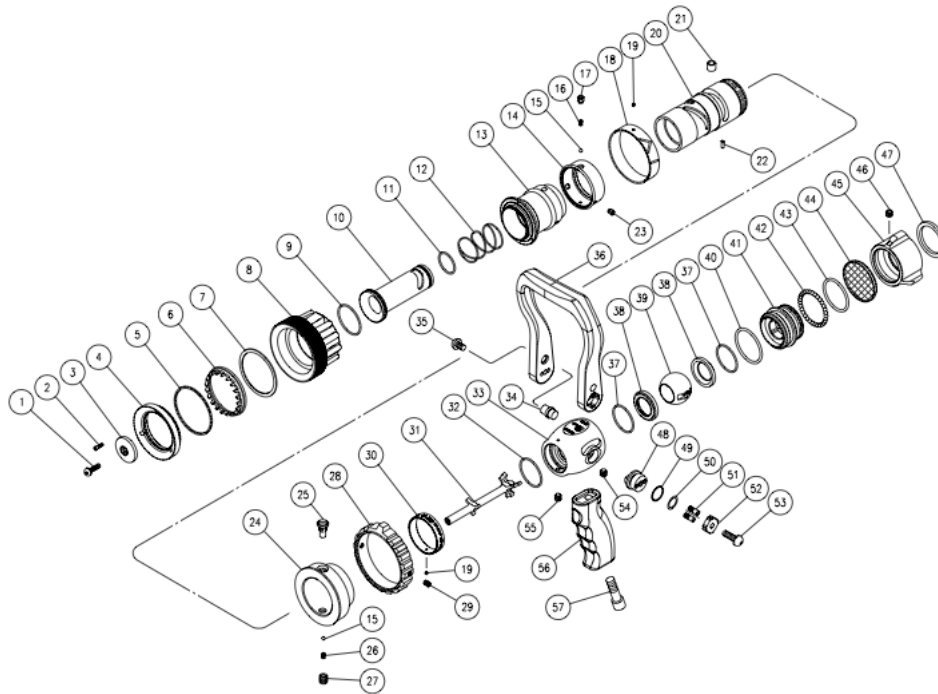


Pressure (bar)	KW-P2365/400 Flow rate (l/min)			
	70	130	230	400
4	58	103	187	325
5	64	116	209	364
6	70	130	230	400
7	76	139	246	429



designed to protect

KINDSWATER



Bill of material

ITEM NO.	DESCRIPTION	PARTS NO .	MATERIAL	QUANTITY	ITEM NO.	DESCRIPTION	PARTS NO .	MATERIAL	QUANTITY
1	SCREW(#10-24UNC)	S0025	304 S.S	1	30	INDICATING BAND	A0866	ALUMINUM	1
*2	SCREW(#4-40UNC)	S0065	304 S.S	3	31	STEM	F0080	ALUMINUM	1
3	BAFFLE	A0010	ALUMINUM	1	*32	O-RING(S-38)	O0205	EPDM	1
4	RETAINING RING	A0007	ALUMINUM	1	33	VALVE BODY	A0071	ALUMINUM	1
5	TEETH BEARING	F0010	TEFLON	1	34	DRIVE SHAFT	F0263	BRONZE	2
6	SPINNING TEETH	D0009	STAINLESS STEEL	1	35	SCREW(1/4"-28UNF)	S0030	304 S.S	2
*6		D0010	ABS	1	36	HANDLE	A0006	COMPOSITE	1
7	TEETH BEARING	F0011	TEFLON	1	*37	O-RING(S-36)	O0200	EPDM	2
8	BUMPER	D0021	EPDM	1	*38	SEAT	F0311	TEFLON	2
9	O-RING(S-40)	O0210	EPDM	1	39	BALL	F0110	BRONZE	1
10	DISCHARGE TUBE	A0855	ALUMINUM	1	*40	O-RING(G-45)	O0325	EPDM	2
11	O-RING(S-27.5)	O0120	EPDM	1	41	ADAPTER	A0917	ALUMINUM	1
12	SPRING	F0097	304 S.S	1	42	BALL BEARING(3/16")	F0076	304 S.S	31
13	PATTERN SLEEVE	A0903	ALUMINUM	1	*43	O-RING(G-42)	O0320	EPDM	1
14	WEAR RING	A0912	304 S.S	3	44	SCREEN	F0138	304 S.S	1
15	BALL BEARING(4mm)	F0071	304 S.S	2	45	SWIVEL(NH)	A0294	ALUMINUM	1
16	SPRING	F0431	304 S.S	1	*46	SCREW(1/4"-28UNF)	S0112	304 S.S	1
17	SCREW(5/16"-24UNF)	S0071	304 S.S	1	*47	GASKET(50*40*4)	D0070	EPDM	1
18	INDICATING BAND	A0863	ALUMINUM	1	*48	TRUNNION(LEFT)	F0100	ALUMINUM	1
19	SCREW(M3*0.5)	S0016	304 S.S	2		TRUNNION(RIGHT)	F0102	ALUMINUM	1
20	NOZZLE BODY	A0905	ALUMINUM	1	*49	GASKET	F0016	TEFLON	2
21	ROLLER	F0750	BRONZE	1	*50	O-RING(P-14)	O0080	EPDM	2
22	PIN(3MM*7.5L)	F0290	BRONZE	1	*51	SCREW(#10-32UNF)	S0131	304 S.S	4
23	SCREW(1/4"-28UNF)	S0110	304 S.S	2	52	RETAINING PLATE	A0851	ALUMINUM	2
24	CONTROL RING	A0909	ALUMINUM	1	*53	SCREW(1/4"-28UNF)	S0039	304 S.S	2
25	SCREW(5/16"-24UNF)	S0250	304 S.S	1	54	SCREW(1/4"-20UNC)	S0114	304 S.S	1
26	DETENT SPRING	F0159	304 S.S	1	*55	SCREW(1/4"-20UNC)	S0116	304 S.S	1
27	SET SCREW(5/16"-24UNF)	S0074	304 S.S	1	56	PISTOL GRIP	A0115	COMPOSITE	1
28	CONTROL RING	A0910	ALUMINUM	1	57	SCREW	S0029	304 S.S	1
29	SCREW(#10-32UNF)	S0013	304 S.S	2					

"*" indicates that the parts included in service kit